

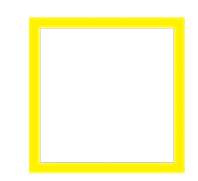




Adam Sorensen

Richard Levy Gallery
info@levygallery.com
505.766.9888
www.levygallery.com
@levygallery  



Adam Sorensen

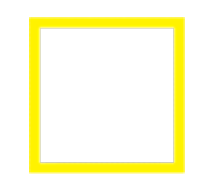
Kant'n, 2024

oil on linen

30.125 x 31.5 inches

76.5 x 80 cm

\$7,000



Adam Sorensen

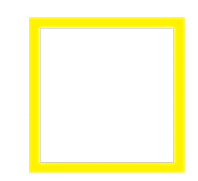
Vor, 2024

oil on linen

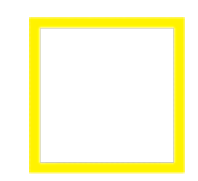
23.25 x 25.4 inches

59.1 x 64.5 cm

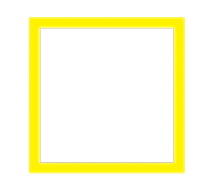
\$5,500



Adam Sorensen
Reise, 2024
oil on linen
23.25 x 25.4 inches
59.1 x 64.5 cm
\$5,500



Adam Sorensen
Cuvacal, 2024
oil on linen
23.25 x 25.4 inches
59.1 x 64.5 cm
\$5,500



Adam Sorensen

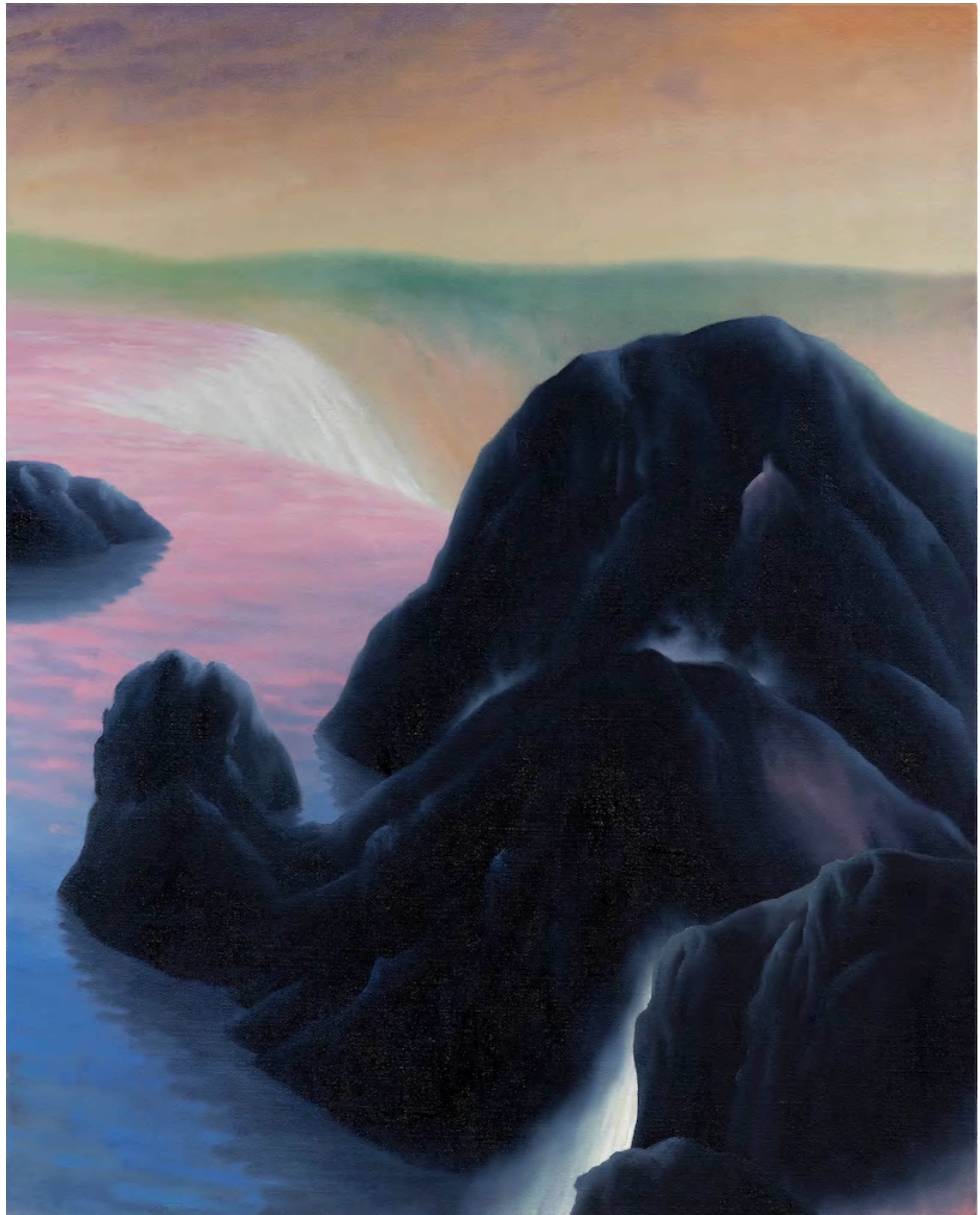
Bondi, 2024

oil on linen

19.75 x 15.875 inches

50.2 x 40.3 cm

\$2,500



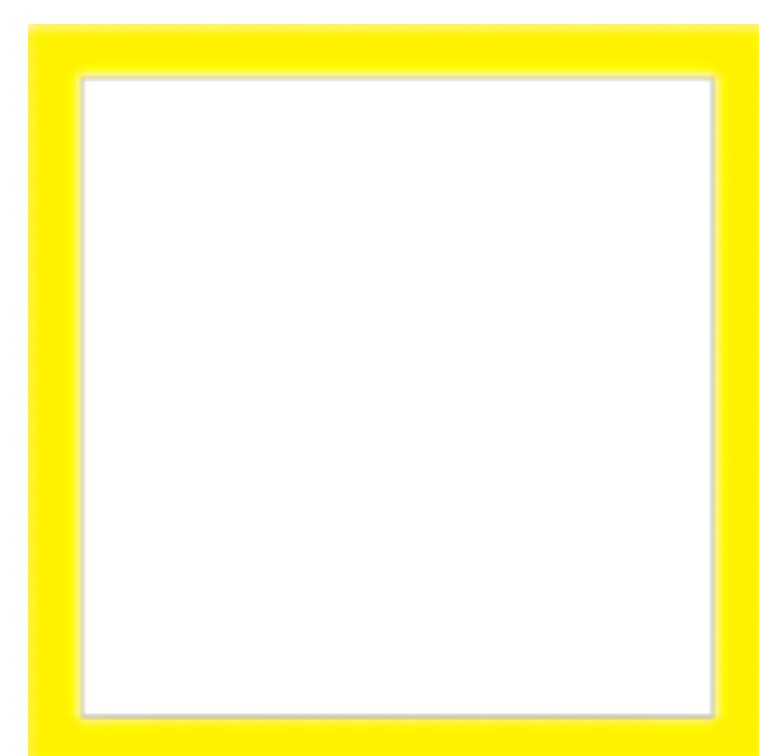


Adam Sorensen (b. 1976) paints fantastical landscapes that are formed by an intuitive process. Rather than predetermining a composition, Sorensen paints elements as they unfold. His signature style is inspired by imagination, 19th-century romanticism, Japanese woodcuts, the Hudson River School, abstract expressionism, and painters of the American West.

Adam Sorensen has shown widely and is in many collections including the Portland Art Museum, Boise Art Museum, and Meta Platforms. His work has been written about in Art Forum, Juxtapoz, and The Huffington Post, among others. Sorensen studied at Alfred University in New York and at Studio Art International in Florence, Italy. The artist lives and works in Portland, OR.

The scenes I end up composing, function as both utopian and eerily post-apocalyptic, both of which can be seen metaphorically as social concerns in contemporary life. By inviting the viewer in visually, I ask them to recall where we have been, explore where we are now, and confront where we may be headed.

—Adam Sorensen



Adam Sorensen

Richard Levy Gallery
info@levygallery.com
505.766.9888
www.levygallery.com
@levygallery 